

# Taps



## Description

45° boot-style tap

- installed on flat side of duct or plenum

## Dimension

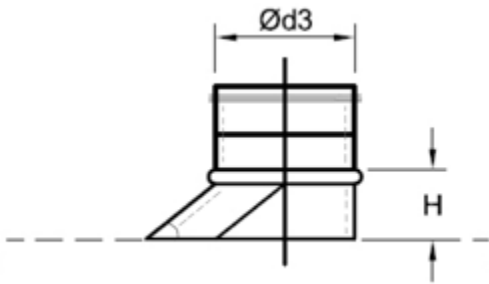
If  $\text{Ød3} + 2i \leq 8"$  H = 4"

If  $\text{Ød3} + 2i = 9"-14"$ , H = 7"

If  $\text{Ød3} + 2i = 15"-26"$ , H = 10"

If  $\text{Ød3} + 2i = 27"-46"$ , H = 13"

If  $\text{Ød3} + 2i = 47"-60"$ , H = 16"



## Order Example

**EHG G-3**  
TBSGI- Ød3

**EHG Nongasketed**  
TBSI- Ød3

# TBSGI/TBSRGI

27



## Description

45° combination boot-style saddle tap

## Dimension

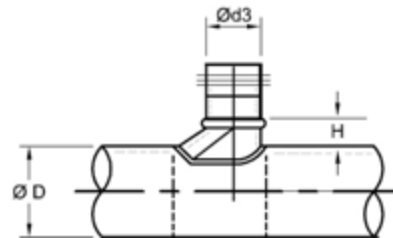
If  $\text{Ød3} + 2i \leq 8"$ , H = 4"

If  $\text{Ød3} + 2i = 9"-14"$ , H = 7"

If  $\text{Ød3} + 2i = 15"-26"$ , H = 10"

If  $\text{Ød3} + 2i = 27"-46"$ , H = 13"

If  $\text{Ød3} + 2i = 47"-60"$ , H = 16"



## Order Example

**EHG G-3**  
TBSRGI - ØD - Ød3

**EHG Nongasketed**  
TBSRI - ØD - Ød3

All sizes refer to inside dimensions. EHG G-3 comes with 1" insulation thicknesses standard and 2" as an option. 3" and 4" thicknesses are available in nongasketed only.

We reserve the right to make changes without prior notice. Therefore, all designs, specifications, and product features are subject to change without notice. The company and its products are protected by patents and registered trademarks. All rights reserved.